



527/537F/557-x Series 350MHz Modulator Driver



3424

The 5x7F series dual modulation drivers are compatible with Isomet 350MHz AO modulators and pulse pickers. These RF drivers include a precision crystal oscillator, wideband mixer, high speed RF switch and power amplifier stage. Separate modulation inputs enable simultaneous analog (level) and digital (On:Off) amplitude control. Drivers can be factory configured for either or both modulation input controls (see options).

Active modulation	Model	Modulation Input
Digital	527F-	5V logic compatible
Analog	537F-	0 - 1V *, 50ohm
Dual	557F-	both, as above

Efficient heat transfer from the driver is required. The mounting surface must be attached to an external heat sink. The supply to the 5x7F drivers is internally regulated and thus will accept a wide DC power input range.

SPECIFICATIONS

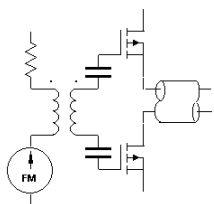
Output impedance:	50Ω Nominal
Load Mismatch VSWR:	2:1 Max
<u>Analogue Input:</u>	0 - 1V * for 100% depth of modulation
RF output analog mod'n On-Off Ratio:	>37dB
<u>Digital Input:</u>	> 2.7V = ON, < 0.8V = OFF
RF output digital mod'n On-Off Ratio:	>50dB
Frequency Accuracy:	± 25ppm
Frequency Stability:	± 25ppm
DC Power Input: 5x7F-2	+22 to +30Vdc regulated to ± 1%, < 500mA
Temperature Range:	0°C to 70°C ambient, temperature at mounting face must not exceed 60°C.

PERFORMANCE

Model	Centre Frequency	Minimum Rise Time	RF Drive Power	Supply
5x7F-1	350MHz	6nsec	>1.1W	+22 to +30V
5x7F-2	350MHz	6nsec	>2.2W	+22 to +30V

ALL SPECIFICATIONS SUBJECT TO CHANGE WITHOUT NOTICE
 ISOMET CORP, 10342 Battleview Parkway, Manassas, VA 20109, USA.
 Tel: (703) 321 8301 Fax: (703) 321 8546
 E-mail: ISOMET@ISOMET.COM Web Page: WWW.ISOMET.COM

Quality Assured.
 In-house: RF & Digital design
 Software Development
 OEM manufacture



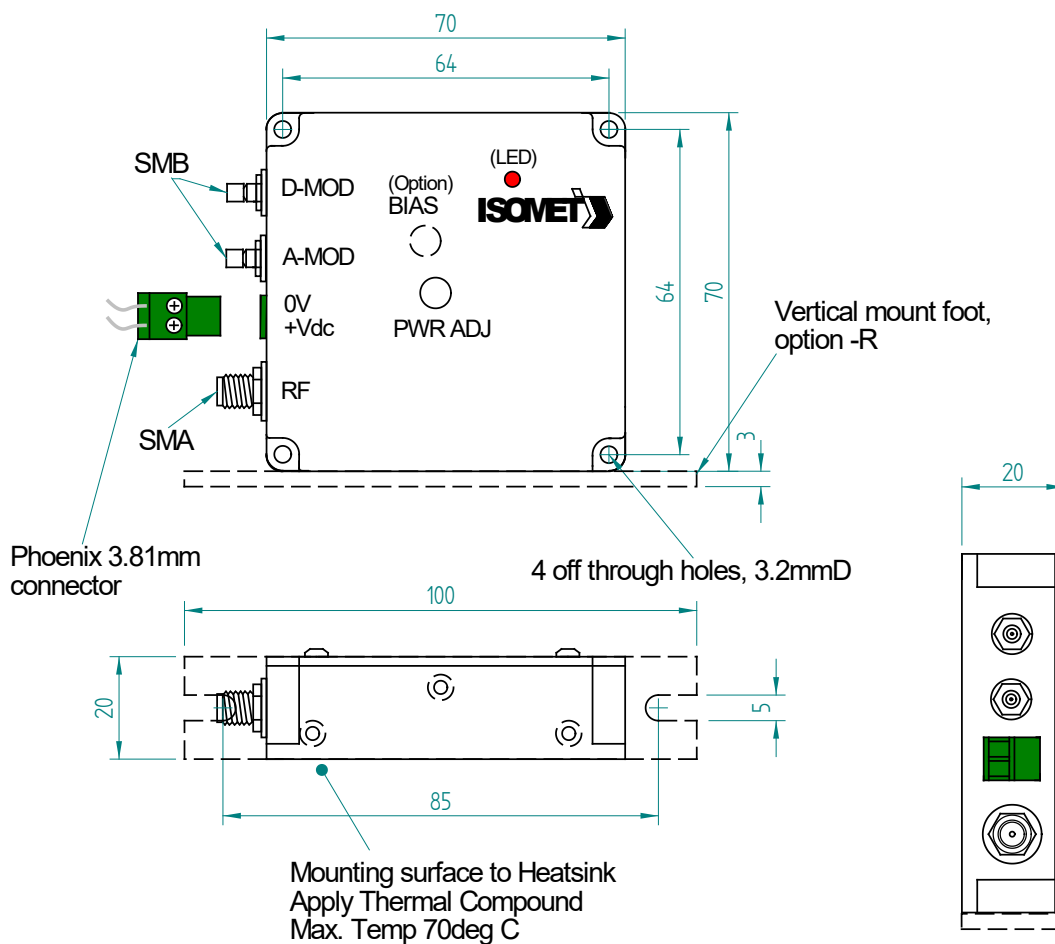
527/537F/557-x Series 350MHz Modulator Driver



3424

OUTLINE DRAWING

Dim'n: mm



Options:

Add suffixes (-x)

Modulation BIAS adj pot	'-B'
Heatsink with fan	'-F'
Vertical mount foot	'-R'
0-5V analog modulation	'-V'
0-10V analog modulation	'-X'
Frequency monitor output*	'-M'
(*available on 527F or 537F models only)	

ALL SPECIFICATIONS SUBJECT TO CHANGE WITHOUT NOTICE

ISOMET CORP, 10342 Battlevue Parkway, Manassas, VA 20109, USA.

Tel: (703) 321 8301 Fax: (703) 321 8546

E-mail: ISOMET@ISOMET.COM Web Page: WWW.ISOMET.COM

Quality Assured.

In-house: RF & Digital design
Software Development
OEM manufacture